



Company name of Bidder:

RFQ: HEIDELBERG: INSTALLATION OF A COMPLETE IRRIGATION SYSTEM

June 2022

This document is not for sale. Any entity that requests payment must be reported at the contact person indicated in this tender.

BID AMOUNT
-------------------	-------

GENERAL REQUIREMENTS

The works, as described, are part of the Agriculture and Land Reform programme for the Garden Route. The site is situated at 4070 Kasper Crescent, Slangsrivier in the Western Cape Province. The quoted amount will be a lump sum bid and must include supply and delivery of all material. The successful bidder must have the capacity to start the works immediately after appointment and complete the work within 14 (fourteen) calendar days.

Note: As per CBD 5.1 Casidra reserves the right to accept parts of the bid items or split bids based upon item prices. No payment will be processed prior to completion and testing of the system.

Conditions that may pose a risk: (Summary of Risk analysis)

- Exposure to elements (sun, cold and dusty conditions);
- Injuries due to the wrong usage of tools;
- Back injuries due to lifting heavy objects and digging trenches.

The Contractor must put all necessary precautions in place to work under these conditions and prepare the site with the correct falls.

The scope of works will include:

1. Installation of a complete irrigation system – stipulate exact requirements under CBD 4 (Scope of works)

Documents can be obtained from the tender portal on Casidra’s website

For office use only	Version no: 11.16	Date: 1 February 2022
To be initialled by bidder		<i>Initial here</i>

Documents for the purpose of this bid include:

1. Conditions to Submit Bid (Form CBD 2.1 or Standard Conditions of Contract can be viewed on the **Casidra** website at www.casidra.co.za).
2. Price Form, Bill of Quantities and Schedules (Form CBD 3.1 (Lump Sum))
3. Scope of Works (Form CBD 4)
4. PPP Evaluation Form (Form CBD 5.1 (80/20))
5. Bank Entity Form (Form CBD 7), unless the banking details of the company indicate “verified” on the Central Supplier Database (CSD).
6. Registration on the CSD for all suppliers is compulsory and registration numbers must be supplied.
7. Drawings

In accordance with Casidra’s Preferential Procurement Policy, this bid as further indicated in CBD 5.1 is subject to:

- ***a functionality compliance test;***
- ***B-BBEE certified bids will receive preferential scores;***
- ***Local production and content***

This bid include goods from a designated sector valves and taps, steel and components and cement and only locally produced goods, services or works, or locally manufactured goods with a stipulated minimum threshold for local production and content will be considered. SBD 6.2 and Annex C, D and E documentation apply and must be completed and handed in with this bid.

RFQ DEADLINE: The closing date for the request for quote is 13th of June 2022 strictly at 12H00.

SUBMISSION OF RFQ

RFQ documents **must only** be emailed and the below process **MUST** be followed regarding email submissions: -

- Bids are to be emailed in PDF format.
- Bids are only to be sent to following via email address: mqotywe@casidra.co.za with the subject title "RFQ:INSTALLATION OF A COMPLETE IRRIGATION SYSTEM"
- Bidders to note that the maximum size of mailbox to receive a document is **8Mb**. (Only send what is asked for. Do not sent Health & Safety plan for example, as it is not called for in the tender document)
- **Casidra** will not be responsible for bidders’ internet connections, mailbox issues, etc.
- The closing date and time is specific and any emailed bids past the submission date will then be considered as late bids. Bidders should therefore submit bid documents timeously to allow for the delivery time lag of emails.

For office use only	Version no: 11.16	Date: 1 February 2022
To be initialised by bidder		<i>Initial here</i>

The following documents (including fully completed and signed **CBD** forms numbered 1 to **7** as supplied) must be **valid for a period of 60 calendar days** after closure of the bid and submitted as a bid packet:

Document number	Document description	Action required/comment	Mark
			√
CBD 1	General requirements	Signed	
CBD 2.1	Conditions to submit bid	Signed	
CBD 3.1	Price form (lump sum)	Complete, sign/ Compulsory	
CBD 3.1 Experience	Proof of previous work and contact details of three work-related references that are qualified to comment on work.	Compulsory	
CBD 3.1 Changes	Indication if any changes are proposed in scope of works and cost implication.	If required	
Unit rates	Unit rates	Compulsory	
CDB 3.1 CM (Construction works only)	Proof of competency of a Construction manager in terms of the Construction regulation 8.	Compulsory	
CBD 4	Scope of works	Signed	
CBD 5.1(80/20)	PPP Evaluation form	Complete, sign	
Local Content CBD 6.2	Local Content Declaration & Annexure C-E	Compulsory	
CBD 7	Bank Entity form (Not needed if "verified" on CSD)	Complete, bank stamp	
TCC of principle and sub-contractors	Registration and verification of Tax Clearance on CSD.	Compulsory	
BEE	B-BBEE Certificate or Sworn Affidavit (as applicable, see CBD 5 for detail)	Original affidavit or certified copy certificate/Valid/not compulsory	
COIDA	Letter of good standing of the Contractor in terms of COIDA	Valid/ compulsory	

All technical enquiries can be referred to Mr M. Qotyiwe at (044) 873 4186 or 082 560 5448.

For office use only	Version no: 11.16	Date: 1 February 2022
To be initialled by bidder	<i>Initial here</i>	

Compliance with the Occupational Health and Safety Act and regulations apply. It is the responsibility of the Contractor to perform all services accordingly.

Take Note: Compliance in terms of the regulations will be strictly enforced and no lenience allowed.

Tenderers to note changes in Health & Safety specification which must take into account COVID 19. Tenderers to allow for provision of additional Health & Safety measures in their bid price.

For definition of Construction works, see the Construction Regulations 2014 and definitions as in Standard Conditions of Contract.

TAX CLEARANCE CERTIFICATE REQUIREMENTS

It is a condition of bid that the taxes of the successful bidder **MUST** be in order, or that satisfactory arrangements have been made with the South African Revenue Service (SARS) to meet the bidder's tax obligations.

In order to meet this requirement, bidders must ensure that they are registered on the CSD and their tax status on the CSD are indicated as compliant. If a discrepancy exist between the CSD and the SARS eFiling of the supplier, then a printed version of the Tax Clearance Certificate must be supplied by the supplier and the eFiling PIN number for verification of authenticity by **Casidra** on the SARS website.

Foreign suppliers with no tax obligation in South Africa must request from **Casidra** and complete a form SBD1 that will be submitted to SARS for verification and issuing of a Confirmation of Tax Obligation letter.

Where Consortia / Joint Ventures / Sub-Contractors are involved, each party must submit a separate Tax Clearance Certificate.

COIDA REQUIREMENTS

The aim of the COID Act is to provide for compensation in the case of disablement caused by occupational injuries and diseases, sustained or contracted by employees in the course of their employment, or death resulting from such injuries and diseases; and to provide for matters connected therewith.

Workers who are injured on duty or obtain an occupational disease can claim compensation for temporary or permanent disablement. If workers die as a result of an injury on duty, their dependants will also be entitled to claim compensation. Employers that registered their employees are protected against civil claims in this regard. The COIDA basically prevents employees covered by the act from suing their employers for damages in terms of common law.

Please note that the following employers are exempted and do not have to pay assessment fees:

- National and provincial state departments;
- Certain local authorities

For office use only	Version no: 11.16	Date: 1 February 2022
To be initialised by bidder		<i>Initial here</i>

- Employers insured by a company other than the Compensation Fund like Mutual Associations. There are currently two approved mutual associations:
 - Federated Employers Mutual Assurance (FEMA), for the building industry; and
 - Rand Mutual Assurance Company (RMA), for the mining industry.

According to prescription, anyone who employs one or more part- or full-time workers **must register** with the Compensation Fund and pay annual assessment fees. The Compensation Fund is a trust fund that is controlled by the Compensation Commissioner and employer contributes to the Compensation Fund. The Commissioner is appointed to administer the Fund and approve claims lodge by employees or their dependants. This means that the Fund will compensate the employee or their dependants and not the employer.

Where a service provider do not have any personnel in employment at time of tender, a letter from the Department of Labour must still be submitted indicating this status. A period of 14 days will be allowed after tender award for registration.

CENTRAL SUPPLIER DATABASE

National Treasury indicated during 2015 the development and future use of the Central Supplier Database (CSD) as a way of simplifying the process of doing business with government.

The CSD will be the source of all supplier information for all organs of state and will reduce the exchange of compliance documents in paper form, eliminate multiple registrations with different organs of state and ultimately reduce the cost for both business and government by enabling electronic registration and verification process.

The CSD will interface with SARS to verify tax clearance certificates and the Companies and Intellectual Property Commission (CIPC) for business registration and business ownership information. The CSD will furthermore verify supplier information with the register for tender defaulters and database of restricted suppliers. (Please see Fact Sheet and CSD pamphlets.)

From 1 September 2015 prospective suppliers should self-register on the CSD website www.csd.gov.za. Apart from registering and capturing supplier information on the CSD, suppliers currently on any database of organs of state need to maintain their records through the existing supplier systems for the period 1 September 2015 to 31 March 2016. This period will be referred to as the Interim Period. During the Interim Period suppliers that register on the CSD must provide their CSD supplier number and unique security code that will be communicated to them as well as any other relevant documentation (not yet electronically verified by the CSD) to the organs of state they want to do business with. **Casidra** urges all their suppliers to please comply with the request.

During the transitional period until 31 March 2016 **Casidra** will migrate our current supplier database to CSD to ensure accuracy and validation of information prior to mandatory implementation of the database.

For more information please contact National Treasury ocpo.treasury.gov.za (http://ocpo.treasury.gov.za/Suppliers_Area/Pages/Central-Supplier-Database.aspx) or Central Supplier Database for Government (<https://secure.csd.gov.za/>).

For office use only	Version no: 11.16	Date: 1 February 2022
To be initialised by bidder	<i>Initial here</i>	



RFQ: HEIDELBERG: INSTALLATION OF A COMPLETE IRRIGATION SYSTEM

June 2022

The total price for this service must include all supply and installation of a complete irrigation system required for the proper execution of the work as described in the Scope of Works.

Take note: This tender will be evaluated on the criteria for a market related price. The full cost of the service and/or works must be indicated and may not be discounted or cross subsidised against another service, project, transaction or sale of goods. Such contributions discounted against the total project cost must be specified, itemised, costed and clearly indicated in the bid.

This prices must be valid for a period of **90** days from the date of closure of the bid to allow for evaluation and appointment.

The completion period of this service is **14 calendar days** starting from the day of appointment.

A. Material:

	DESCRIPTION	QUAN TITY	UNIT PRICE	TOTAL
A	Nylon Tanks			
1	10 000Lt Tanks	4		
2	1000Lt Tank	1		
B	Nylon Fittings – 10 000Lt Tanks			
1	40mm Nipple	4		
2	40mm PVC Valve	4		
3	25mm Nylon Insert Combination Elbow	4		
4	40x25mm Red. Bush	5		
5	25mm Insert Elbow	3		
6	25mm Insert Tee	3		
7	25mm Clamps	30		
8	25mm Valve	1		
9	25mm Insert male Adaptor	1		
C	Nylon Fittings for 1000Lt Tenk			
1	40x25mm Nylon Red. Bush	1		
2	25mm Nipple	1		
3	25mm PVC Valve	3		
4	25mm Insert Combination Bend	1		
5	<u>25mm Arkal Filter with Red Rings = 130 Micron</u>			
6	25mm Socket	1		
7	25mm Insert Male Adaptor	6		
8	25mm Insert Elbow	1		
9	25mm Insert Tee	3		
10	25mm End Plug	4		
11	25mm Clamps	25		
D	Poly Pipe class 3			
For office use only		Version no: 11.16	Date: 1 February 2022	
To be initialised by bidder		<i>Initial here</i>		

1	25mm Poly Pipe class 3	200m		
E	Netafim Family Drip or similar			
1	Netafim Family Drip pipe (0.3 x .65Lt/Hr)	250m		
2	Start Connectors for PE pipe complete	25		
3	Punch for Start connectors 3.2mm	1		
4	±3.2mm x 300mm Wire for end of drip line support	25		
5	Cable tie for item E.4	25		
6	Insert Connectors	5		
F	Tank Stand for 1000Lt			
1	Galv. Tank stand 1200mm x 1200mm x H1800mm for 1000Lt with legs 1.8m long with 5mm x 200x200mm base plates. Tenk staander word in 25Mpa beton geanker (300mm diep)/ Tank stand is anchored in 25 MPa concrete (300mm deep)	1		
2	Behandelde Planke 1300mm x 200mm x 38mm – Planke kom tussen Tenk Staander en Tenk/ Treated Planks 1300mm x 200mm x 38mm - Planks come between Tank Stand and Tank	5		
G	Pump and Fittings			
1	Pentax CM 50 Pump and Motor (1.2m ³ /Hr @ 20m) with 10m Electric cable and plug– ready for use Gemonteer op Draagbare metaal plaat met “8mm rond bar” ore vir oprol van 10m Elektriese kabel Eenheid moet draagbaar wees/ Mounted on Portable metal plate with “8mm round bar” ears for winding up of 10m Electrical cable Unit must be portable	1		
2	25mm Galv. Nipple vir Pomp uitlaat/ Nipple for Pump outlet	1		
3	25mm Galv. Swage Adaptor vir Pomp inlaat and Pipe outlet/ 25mm Galv. Swage Adapter for Pump inlet and Pipe outlet	5		
4	25mm x 1000mm Kanaflex (Geel) suigpyp/ 25mm x 1000mm Kanaflex (Yellow) suction pipe	2		
5	25mm Male Cam Lock coupling – Male Adaptor – Female Threaded (to go with item G.4)	2		
6	25mm M/F Elbow for Pump outlet	1		
7	25mm PVC Valve	1		
8	25mm Galv. Socket	2		
9	25mm Nylon insert Male adaptor	2		
10	25mm Clamps	16		
11	25mm Insert Elbow	5		
12	25mm Insert Nipple	2		
13	25mm Gal. Nipple	2		
14	25mm Cam Lock Coupling - Female Coupler – Female Threaded (To go with item G.5)	2		

For office use only	Version no: 11.16	Date: 1 February 2022
To be initialised by bidder	<i>Initial here</i>	

H	Material for 10 000Lt Tenk Platform			
1	Die 4 x 10 000Lt Tenke moet op selfde hoogte staan. Bou n dubbel Baksteen muur met mates van L2300mm x B2300mm. Vul met grond en kompakteer. Seel met 100mm x 25Mpa beton Blad/ Tanks must be at the same height. Build a double Brick wall with dimensions of L2300mm x W2300mm. Fill with soil and compact. Stamp with 100mm x 25Mpa concrete Sheet Tenk 1- 0 Hoogte/High Tenk 2 – 150mm Hoogte/High Tenk 3 – 400mm Hoogte/High Tenk 4 – 900mm Hoogte/High			
2	100mm Geut/PVC Pyp/Pipe (3m)	4		
3	Plaas 1 x 100mm Pyp in bestaande Kanaal onder nuwe platform – Tenk 2/ Place 1 x 100mm Pipe in existing Channel under new platform - Tank 2			
4	Plaas 2 x 100mm Pyp in bestaande Kanaal onder nuwe platform – Tenk 3/ Place 2 x 100mm Pipe in existing Channel under new platform - Tank 3			
5	Plaas 2 x 100mm Pyp in bestaande Kanaal onder nuwe platform – Tenk 4/ Place 2 x 100mm Pipe in existing Channel under new platform - Tank 4			
(A) 15% VAT				R
(A) TOTAL AMOUNT				R

B. Labour

I	Work to be done			
1	Bou 10 000Lt Tenke Platforms soos in H.3,4,5 aangetoon met Hoogte soos in H.1 aangetoon met een sy teenaan Skool gebou/ Build 10 000Lt Tanks Platforms as shown in H.3,4,5 with Height as shown in H.1 with one side next to School building	4		
2	Installeer 4 Tenke op Platforms/ Install 4 Tanks on Platforms	4		
3	Verbind die Geut uitlate met Tenke aan Bokant/ Connect the Gutter outlets to Tanks at the Top	4		
4	Installeer Krane, Nylon Fittings by Tenk uitlate/ Install Taps, Nylon Fittings at Tank Outlets	4		
5	Installeer n 25mm Poly Pyp 300mm diep wat al 4 Tenke verbind/ Install a 25mm Poly Pipe 300mm deep connecting all 4 Tanks	±50m		
6	Installeer 25mm Poly Pyp vanaf Pomp posisie langs Tenk 1 na 1000Lt Tenk/Lande - 300mm Diep/	±100m		

For office use only	Version no: 11.16	Date: 1 February 2022
To be initialised by bidder	<i>Initial here</i>	

	Install 25mm Poly Pipe from Pump position next to Tank 1 to 1000Lt Tank / Lands - 300mm Deep			
7	Installeer Tenk Staander Waterpas op 100mm x 25Mpa beton (4 x Tenk Staander Bene moet 300mm diep geanker word. 100mm onder Pote, opgevol met 200mm tot Grondvlak (4 x gate = 300x300 x 300mm diep)/ Install Tank Stand Level at 100mm x 25Mpa concrete (4 x Tank Stand Legs must be anchored 300mm deep. 100mm below Legs, filled with 200mm to Ground Level (4 x holes = 300x300 x 300mm deep)			
8	Installeer 1000Lt Tenk op Tenk Staander geanker met draad aan Staal struktuur/ Install 1000Lt Tank on Tank Stand anchored with wire to Steel structure	1		
9	Installeer 25mm Poly Pyp vanaf Pomp na Bokant van 1000Lt Tenk/ Install 25mm Poly Pipe from Pump to Top of 1000Lt Tank			
10	Installeer Fittings , Filter by 1000Lt Tenk uitlaat – sien skets/ Install Fittings, Filter at 1000Lt Tank outlet - see sketch			
11	Installeer 25mm Hooflyn na 2 Blokke– sien skets/ Install 25mm Main Line to 2 Blocks - see sketch			
12	Installeer 2 x 25mm Manifold x 6m (Blok 1 en 2)/ Install 2 x 25mm Manifold x 6m (Blocks 1 and 2)			
13	Installeer 2 Blokke se drup pyp (0.6m tussen drup lyne = 10 Lyne per blok x 10m lank geanker met draad (E.4) op end/ Install 2 Blocks' drip pipe (0.6m between drip lines = 10 Lines per block x 10m long anchored with wire (E.4) at end	2 Blokke		
14	Installeer Pomp met fittings op draagbare platform/ Install Pump with Fittings on Portable Platform			
15	Toets sisteem – 1) Pomp water na 1000Lt Tenk 2) Loop drup blokke en kyk vir lekkasies Test system - • Pump water to 1000Lt Tank • Walk drip blocks and look for leaks			
NB	Werk sal as afgehandel aanvaar word na Toets van stelsel volgens voorskrif en spesifikasies in die teenwoordigheid van Dept. Landbou se Tegnikus sowel as FSD en Casidra se verantwoordelike Beamptes/ Work will be accepted as completed after Testing of system according to prescription and specifications in the presence of Dept. Agricultural Technician as well as FSD and Casidra's Responsible Officers			

For office use only	Version no: 11.16	Date: 1 February 2022
To be initialised by bidder	<i>Initial here</i>	

(B) 15% VAT		R
(B) TOTAL AMOUNT		R

Sub Total **(A+B)** R _____

Value-Added Tax (VAT) **(A+B)** R _____

Grand Total **(A+B)** R _____

Are you registered in terms of sections 23(1) of 23(3) of the Value-added Tax act 1991(Act No. 89 of 1991) (Please circle your answer)

YES NO

If yes, provide your VAT registration number: _____

Signature: _____

Date: _____

For office use only	Version no: 11.16	Date: 1 February 2022
To be initialised by bidder		<i>Initial here</i>

CHANGES MADE BY BIDDER

If the bidder wishes to make any changes to any of the bid conditions or specifications, or if he wishes to qualify his bid in any way, he must clearly set out his suggestions below. If he makes **ANY** changes and do not list them below, his bid will be disqualified.

If no changes or amendments are made, please indicate it below by writing **NONE** in the space below.

NB. Any changes made by the bidder outside the scope of works, resulting in not meeting pre-qualifying conditions or compulsory subcontracting, may influence the functionality of the end product and may result in the bid being disqualified.

Item	Suggested Change

If more space is required, please add a separate page.

SCHEDULE: PROOF OF RELEVANT EXPERIENCE & REFERENCES

For office use only	Version no: 11.16	Date: 1 February 2022
To be initialled by bidder	<i>Initial here</i>	

The following is a summary of works that have been completed successfully by bidder. In order to be compliant for this bid, the following detail **MUST** be included:-

- Supply at least three relevant different references with contact numbers.
- The description of work must be relevant to the nature of this contract. For eg, do not list fencing projects completed when the scope of works is for GPS satellite installation.
- Elaborate on project description. For eg. do not state INSTALLATION – Be specific as to the works executed in the contract to support relevant experience.

Employer (include contact information)	Description	Value of Work	Completed

If more space is required, please add a separate page.

For office use only	Version no: 11.16	Date: 1 February 2022
To be initialled by bidder	<i>Initial here</i>	

COIDA LETTER OF GOOD STANDING

The contractor must attach to this page a copy of the current letter of good standing

If more space is required, please add a separate page.

For office use only	Version no: 11.16	Date: 1 February 2022
To be initialled by bidder	<i>Initial here</i>	

SCHEDULE: DETAIL AND TRAINING AND EXPERIENCE OF SITE MANAGER

The site manager that will be on site full time will be _____,
with ID number _____.

He/she has sufficient experience, knowledge and skills to manage the work.
Experience includes the following: _____

Training and Skills include the following: _____

For office use only	Version no: 11.16	Date: 1 February 2022
To be initialled by bidder	<i>Initial here</i>	



RFQ: SUPPLY AND INSTALLATION OF A COMPLETE IRRIGATION SYSTEM

Scope of works

This project consists of the following elements:

- 1 Supply and installation of a complete irrigation system
 - a. Adhere to the attached irrigation layout and specification

SLANGSRIVIER PRIMARY SCHOOL: SCOPE OF WORKS

	DESCRIPTION	QUANTITY
A	Nylon Tanks	
1	10 000Lt Tanks	4
2	1000Lt Tank	1
B	Nylon Fittings – 10 000Lt Tanks	
1	40mm Nipple	4
2	40mm PVC Valve	4
3	25mm Nylon Insert Combination Elbow	4
4	40x25mm Red. Bush	5
5	25mm Insert Elbow	3
6	25mm Insert Tee	3
7	25mm Clamps	30
8	25mm Valve	1
9	25mm Insert male Adaptor	1
C	Nylon Fittings for 1000Lt Tenk	
1	40x25mm Nylon Red. Bush	1
2	25mm Nipple	1
3	25mm PVC Valve	3
4	25mm Insert Combination Bend	1
5	<u>25mm Arkal Filter with Red Rings = 130 Micron</u>	
6	25mm Socket	1
7	25mm Insert Male Adaptor	6
8	25mm Insert Elbow	1
9	25mm Insert Tee	3
10	25mm End Plug	4
11	25mm Clamps	25
D	Poly Pipe class 3	
1	25mm Poly Pipe class 3	200m
E	Netafim Family Drip	
1	Netafim Family Drip pipe (0.3 x .65Lt/Hr)	250m

For office use only	Version no: 11.16	Date: 1 February 2022
To be initialised by bidder	<i>Initial here</i>	

2	Start Connectors for PE pipe complete	25
3	Punch for Start connectors 3.2mm	1
4	±3.2mm x 300mm Wire for end of drip line support	25
5	Cable tide for item E.4	25
6	Insert Connectors	5
F	Tank Stand for 1000Lt	
1	Galv. Tank stand 1200mm x 1200mm x H1800mm for 1000Lt with legs 1.8m long with 5mm x 200x200mm base plates. Tenk staander word in 25Mpa beton geanker (300mm diep)/ Tank stand is anchored in 25 MPa concrete (300mm deep) Casidra sal kan help met n Vervaardiger in George wat Tenk staander bou	1
2	Behandelde Planke 1300mm x 200mm x 38mm – Planke kom tussen Tenk Staander en Tenk/ Treated Planks 1300mm x 200mm x 38mm - Planks come between Tank Stand and Tank.	5
G	Pump and Fittings	
1	Pentax CM 50 Pump and Motor (1.2m ³ /Hr @ 20m) with 10m Electric cable and plug– ready for use Gemonteer op Draagbare metaal plaat met “8mm rond bar” ore vir oprol van 10m Elektriese kabel Enheid moet draagbaar wees/ Mounted on Portable metal plate with “8mm round bar” ears for winding up of 10m Electrical cable Unit must be portable	1
2	25mm Galv. Nipple vir Pomp uitlaat/ Nipple for Pump outlet	1
3	25mm Galv. Swage Adaptor vir Pomp inlaat and Pipe outlet/ 25mm Galv. Swage Adapter for Pump inlet and Pipe outlet	5
4	25mm x 1000mm Kanaflex (Geel) suigpyp/ 25mm x 1000mm Kanaflex (Yellow) suction pipe	2
5	25mm Male Cam Lock coupling – Male Adaptor – Female Threaded (to go with item G.4)	2
6	25mm M/F Elbow for Pump outlet	1
7	25mm PVC Valve	1
8	25mm Galv. Socket	2
9	25mm Nylon insert Male adaptor	2
10	25mm Clamps	16
11	25mm Insert Elbow	5
12	25mm Insert Nipple	2
13	25mm Gal. Nipple	2
14	25mm Cam Lock Coupling - Female Coupler – Female Threaded (To go with item G.5)	2
H	10 000Lt Tenk Platform	
1	Die 4 x 10 000Lt Tenke moet op selfde hoogte staan. Bou n dubbel Baksteen muur met mates van L2300mm x B2300mm. Vul met grond en kompakteer. Seel met 100mm x 25Mpa beton Blad/ Tanks must be at the same height. Build a double Brick wall with dimensions of L2300mm x W2300mm. Fill with soil and compact. Stamp with 100mm x 25Mpa concrete Sheet	

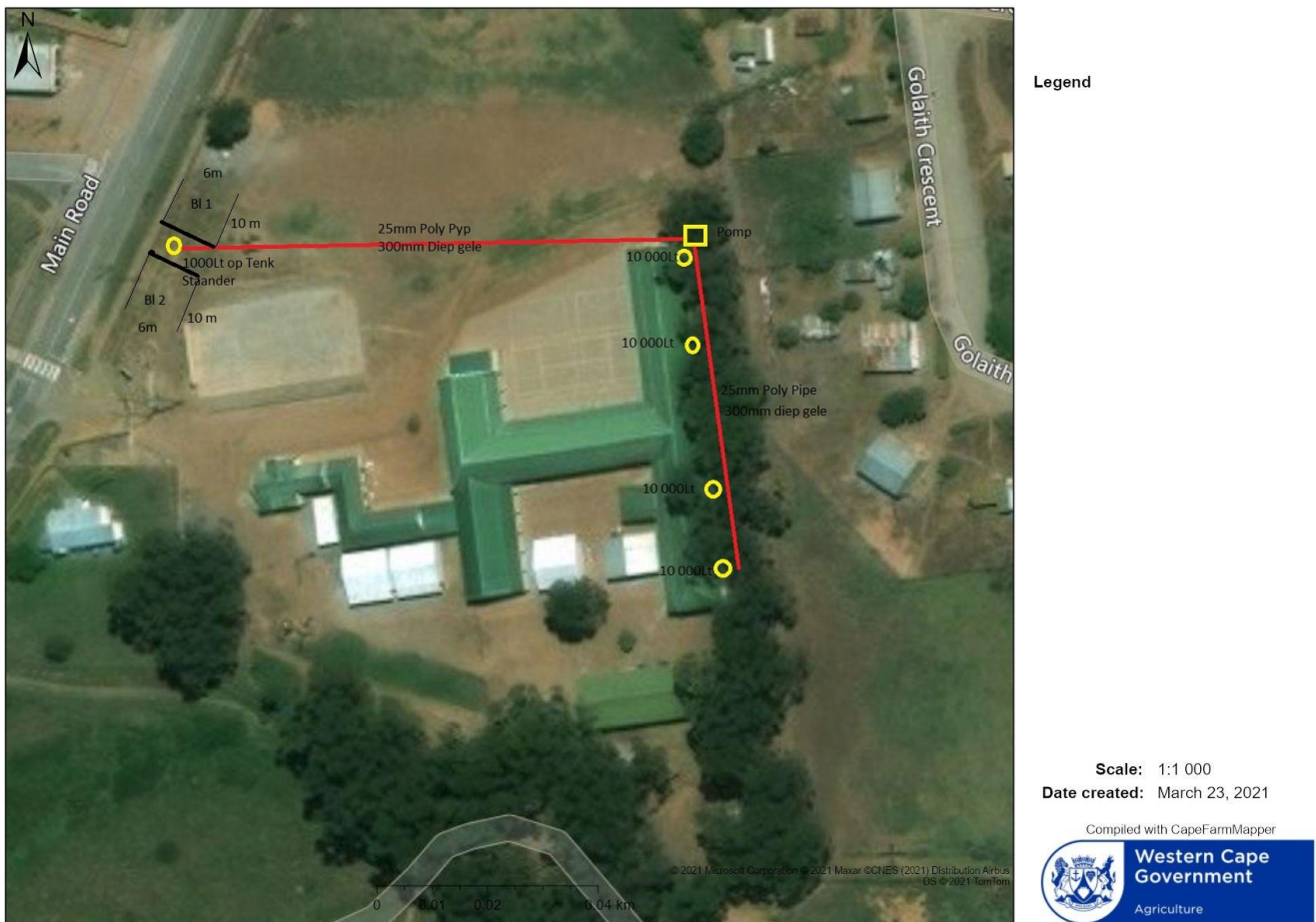
For office use only	Version no: 11.16	Date: 1 February 2022
To be initialised by bidder	<i>Initial here</i>	

	Tenk 1- 0 Hoogte/High Tenk 2 – 150mm Hoogte/High Tenk 3 – 400mm Hoogte/High Tenk 4 – 900mm Hoogte/High	
2	100mm Geut/PVC Pyp/Pipe (3m)	4
3	Plaas 1 x 100mm Pyp in bestaande Kanaal onder nuwe platform – Tenk 2/ Place 1 x 100mm Pipe in existing Channel under new platform - Tank 2	
4	Plaas 2 x 100mm Pyp in bestaande Kanaal onder nuwe platform – Tenk 3/ Place 2 x 100mm Pipe in existing Channel under new platform - Tank 3	
5	Plaas 2 x 100mm Pyp in bestaande Kanaal onder nuwe platform – Tenk 4/ Place 2 x 100mm Pipe in existing Channel under new platform - Tank 4	
I	Work to be done	
1	Bou 10 000Lt Tenke Platforms soos in H.3,4,5 aangetoon met Hoogte soos in H.1 aangetoon met een sy teenaan Skool gebou/ Build 10 000Lt Tanks Platforms as shown in H.3,4,5 with Height as shown in H.1 with one side next to School building	4
2	Installeer 4 Tenke op Platforms/ Install 4 Tanks on Platforms	4
3	Verbind die Geut uitlate met Tenke aan Bokant/ Connect the Gutter outlets to Tanks at the Top	4
4	Installeer Krane, Nylon Fittings by Tenk uitlate/ Install Taps, Nylon Fittings at Tank Outlets	4
5	Installeer n 25mm Poly Pyp 300mm diep wat al 4 Tenke verbind/ Install a 25mm Poly Pipe 300mm deep connecting all 4 Tanks	±50m
6	Installeer 25mm Poly Pyp vanaf Pomp posisie langs Tenk 1 na 1000Lt Tenk/Lande - 300mm Diep/ Install 25mm Poly Pipe from Pump position next to Tank 1 to 1000Lt Tank / Lands - 300mm Deep	±100m
7	Installeer Tenk Staander Waterpas op 100mm x 25Mpa beton (4 x Tenk Staander Bene moet 300mm diep geanker word. 100mm onder Pote, opgevul met 200mm tot Grondvlak (4 x gate = 300x300 x 300mm diep)/ Install Tank Stand Level at 100mm x 25Mpa concrete (4 x Tank Stand Legs must be anchored 300mm deep. 100mm below Legs, filled with 200mm to Ground Level (4 x holes = 300x300 x 300mm deep)	
8	Installeer 1000Lt Tenk op Tenk Staander geanker met draad aan Staal struktuur/ Install 1000Lt Tank on Tank Stand anchored with wire to Steel structure	1
9	Installeer 25mm Poly Pyp vanaf Pomp na Bokant van 1000Lt Tenk/ Install 25mm Poly Pipe from Pump to Top of 1000Lt Tank	
10	Installeer Fittings , Filter by 1000Lt Tenk uitlaat – sien skets/ Install Fittings, Filter at 1000Lt Tank outlet - see sketch	
11	Installeer 25mm Hooflyn na 2 Blokke– sien skets/ Install 25mm Main Line to 2 Blocks - see sketch	
12	Installeer 2 x 25mm Manifold x 6m (Blok 1 en 2)/ Install 2 x 25mm Manifold x 6m (Blocks 1 and 2)	
13	Installeer 2 Blokke se drup pyp (0.6m tussen drup lyne = 10 Lyne per blok x 10m lank geanker met draad (E.4) op end/ Install 2 Blocks' drip pipe (0.6m between drip lines = 10 Lines per block x 10m long anchored with wire (E.4) at end	2 Blokke
14	Installeer Pomp met fittings op draagbare platform/ Install Pump with Fittings on Portable Platform	
15	Toets sisteem – 3) Pomp water na 1000Lt Tenk	

For office use only	Version no: 11.16	Date: 1 February 2022
To be initialised by bidder	<i>Initial here</i>	

	<p>4) Loop drup blokke en kyk vir lekkasies</p> <p>Test system -</p> <ul style="list-style-type: none"> • Pump water to 1000Lt Tank • Walk drip blocks and look for leaks 	
NB	<p>Werk sal as afgehandel aanvaar word na Toets van stelsel volgens voorskrif en spesifikasies in die teenwoordigheid van Dept. Landbou se Tegnikus sowel as FSD en Casidra se verantwoordelike Beampptes/</p> <p>Work will be accepted as completed after Testing of system according to prescription and specifications in the presence of Dept. Agricultural Technician as well as FSD and Casidra's Responsible Officers</p>	

Sketch: Below



Irrigation Layout: See Image 1.

See attached addendum A.

END OF WORK TO BE DONE

For office use only	Version no: 11.16	Date: 1 February 2022
To be initialised by bidder		<i>Initial here</i>



**FINANCIAL REGULATIONS
SECTION 22**

**SUPPLY CHAIN MANAGEMENT – PREFERENTIAL PROCUREMENT POLICY
- EVALUATION CRITERIA**

(PPP – EVALUATION CRITERIA)

ONLY FOR USE OF BIDS FROM R30 000 TO THE MAXIMUM VALUE OF R50 MILLION

Casidra, as a Schedule 3D development and implementation agent for the Western Cape Provincial Government underwrites, and complies to, the Provincial and National developmental initiatives and administers funds on behalf of donors. Within this context, and because of the specific requirements of the donors for the application of the funds, the awarding of bids are dependent on the special evaluation criteria as set out in the policies of **Casidra**. The evaluation criteria of this Preferential Procurement Policy is based on the “**Preferential Procurement Policy Framework (Act 5 of 2000)**” and related Regulations.

Awarding of the bid is dependent on a, preferential points system, and every presentation is measured against the specific evaluation criteria as shown. **The completion and signature of the document is thus a pre-requisite to qualify as a service provider.**

GENERAL DETAILS: (Please print clearly)	
Registered Company Name	
Trading Name / Individual Full Name	
Company Reg Number / ID Number	
VAT Number	
CSD Supplier Number *	
CSD Unique Registration Ref Number *	
Postal Address	
Postal Code	
Physical Address	
Postal Code	
CONTACT DETAILS	

For office use only	Version no: 11.16	Date: 1 February 2022
To be initialised by bidder	<i>Initial here</i>	

Representative Name	
Telephone Number	
Cell Phone Number	
Fax Number	
Email Address	
Website Address	
OTHER DETAILS	
Main Business Type (<i>Please tick</i>)	Consultants & Professionals
Tools & Equipment (Hardware)	Clothing & Textiles
Office Supplies & Furniture	Accommodation & Transport
Training & Mentorship	Printing & Advertising
Event Services (Catering, Venue Hire)	Irrigation & Water Services
Earthmoving & Heavy Machinery	Other Production Inputs
Seed, Fertilizer, Chemicals	Livestock & Animal Production
Construction Services	Repairs & Maintenance
Vehicles & Implements	Municipal & Bulk Services
Other (Please Specify)	
* Note that you HAVE to register on the Central Supplier Database (CSD) (www.csd.gov.za) before we can use you as a service provider.	

Sub-contracting

Excluding any subcontracting requirements as a condition of tender, as indicated in CBD 1, the following general condition apply:

A Maximum of 25% of the value of the contract may be subcontracted without proof of the subcontractor B-BEE status:

- unless with proof of a subcontractor with equal or better B-BBEE points
- unless the subcontractor is an exempted micro enterprise with the capacity and ability to execute the subcontract.

In event of the above, full disclosure by the contractor must be made in the bid documents to **Casidra** with full details on the subcontractor as well as proof of the capacity and ability of the subcontractor to execute the work. Subcontracting a portion of the tender, without disclosure and approval by **Casidra**, the Contractor can be penalised up to 10% of the value of the contract.

Will any portion of the contract be sub-contracted? YES / NO (delete which is not applicable)

If YES, indicate:

- (i) what percentage of the contract will be subcontracted?
- (ii) The name of the sub-contractor?
- (iii) The B-BBEE status level of the sub-contractor?
- (iv) Whether the sub-contractor is an EME? YES / NO (Attach B-BBEE certificate / an original sworn affidavit as proof)

Final points awarded to bid = (B) Price Max 80% + (C) B-BBEE Max 20%

For office use only	Version no: 11.16	Date: 1 February 2022
To be initialised by bidder	<i>Initial here</i>	

Section A – Functional Requirements

Functional refers to: A service or product that is designed to be practical, useful, working or operating, taking into account factors like quality, reliability, viability, and durability and the technical capacity (time and resources) and ability (knowledge and skills) of the bidder to execute the works.

An offer that does not obtain the minimum score for each functionality criterion or the minimum weighted average for functionality as indicated, is not an acceptable tender. Is this bid subject to the evaluation of functional requirements? **Yes (Casidra to indicate)**

If “YES”, the following criteria will be used for evaluation:

No	Evaluation criteria	Weight (A)	Score (B) 1= poor 5=excellent	Minimum score required	Total (A x B)
1	Experience of similar work	50%	For office use	4	For office use
2	References of previous work	50%	For office use	4	For office use
TOTAL SCORE - A minimum score of <u>80</u> % is required for functional requirements for this bid to be considered for further evaluation				% = Total / 5	For office use

Functional Item	1 Poor: Non-compliant	2	3	4	5 Excellent: Fully compliant
References from clients on similar nature related previous work	No references or very poor rapport by all three reference	Some minor problems experienced by all three references	Moderately good by all three references	Recommended by all three references	Highly recommended by all three references
Experience of similar work – (refer to company CV)	No experience	Limited exposure to work at hand	Not similar, but related	Similar work	High level similar work

Section B – Formula for Awarding of Price Points (Only to be considered if Section A has met the minimum requirement)

Unconditional discounts offered will be taken into account for determining the following point:

Price - P min

Point = 80 [1 - P min] where P min is the lowest acceptable bid

Section C – B-BBEE Contribution

For office use only	Version no: 11.16	Date: 1 February 2022
To be initialled by bidder		<i>Initial here</i>

- An *EME* must submit a valid, fully completed, **original, certified, dated and signed sworn affidavit** (no photostat copies of certification allowed) confirming annual turnover and level of black ownership or an affidavit issued by Companies Intellectual Property Commission (accounting officer for a Closed Corporation).
- If a **start-up EME**, a **clear, originally certified copy**, of B-BBEE certificate issued by the CIPC for EME's only is accepted.
- A **QSE that is less than 51% (50% or less) black owned** must be verified in terms of the QSE scorecard issued via Government Gazette and submit a **clear, valid, originally certified copy** of a B-BBEE Verification Certificate issued by SANAS.
- A **QSE that is at least 51% black owned (51% or higher)** must submit an **original, certified, dated and signed sworn affidavit** confirming turnover and level of black ownership as well as declare its empowering status or an affidavit issued by Companies Intellectual Property Commission.
- A **large enterprise** must submit a **clear, valid, originally certified copy** of a B-BBEE Verification Certificate issued by a verification agency accredited by SANAS.
- A **trust, consortium or joint venture**, will qualify for points for their B-BBEE status level as a legal entity, provided that the entity submits their B-BBEE status level certificate.
- A **trust, consortium or joint venture** (including unincorporated consortia and joint ventures) must submit a consolidated B-BBEE status level verification certificate for every separate tender.
- **Tertiary institutions and public entities** will be required to submit their B-BBEE status level certificates in terms of the specialized scorecard contained in the B-BBEE Codes of Good Practice.

Bids of non-compliant contributors (no certificate) will be considered, but no points will be awarded for B-BBEE status.

B-BBEE Status level of contributor	Number of points	Points awarded	BEE recognition level
1	20	EME & QSE 100% Black owned For office use	135%
2	18	EME & QSE 51% + Black owned For office use	125%
3	14	For office use	110%
4 and EME	12	EME 51% < Black owned For office use	100%
5	8	For office use	80%
6	6	For office use	60%
7	4	For office use	50%
8	2	For office use	10%
Non-compliant contributor	0	For office use	0%

For office use only	Version no: 11.16	Date: 1 February 2022
To be initialised by bidder		<i>Initial here</i>

In the case of a trust, joint venture or consortium that is registered as a legal entity, a B-BBEE certificate for the entity must be provided. If the entity is unincorporated, a B-BBEE certificate must be prepared for the specific venture.

Market related pricing

If the bidder, whose tender has been compliant, and that received the highest overall points, do not offer a market related price, the offer may be negotiated with that bidder to be market related.

Are you willing to negotiate your offer? YES / NO (delete which is not applicable)

If a market related price cannot be negotiated, the offer for negotiation will be extended to the second highest point scoring bidder, then the third highest scoring bidder, where after, failing to reach any agreement, the tender will be cancelled.

Declaration of interest and Bidders past supply chain management practices

In terms of section 22 of the Standard Conditions of Tender:

Are any family member, trustee, director, shareholder or member of the bidder in any way connected to the State?

and/or

Do any potential conflict of interest exist, where the public duties (like being part of an approval or adjudication process) and private interests of the bidder, could improperly influence or lend inside trading information to the bidder?

and/or

Do the bidder have any relationship with a person that may be involved with the evaluation or adjudication of this bid? In view of possible allegations of favouritism, it is required that the bidder declare his/her position in relation to the Client.

If so, furnish particulars:

.....
.....
.....
.....

The bid may be disregarded if that bidder or its directors have abused the Client's supply chain management system, committed fraud or any other improper conduct in relation to such system."

- (i) Is the bidder or any of its directors;
 - listed on the National Treasury's Database of Restricted Suppliers as companies or persons prohibited from doing business with the public sector? (www.treasury.gov.za, follow the link at the bottom of the home page)?;
 - Listed on the register for Tender Defaulters in terms of section 29 of the Prevention and Combating of Corrupt Activities Act?

- (ii) Was the bidder or any of its directors;
 - convicted by a court of law (including a court outside of the RSA) for fraud or corruption during the past five years?;

For office use only	Version no: 11.16	Date: 1 February 2022
To be initialised by bidder	<i>Initial here</i>	

- contract with any organ of state terminated during the past five years on account of failure to perform on or comply with the contract?

If so, furnish particulars:

.....

Section D – Designated Sectors – Local Content

The following sectors in this bid are subject to a stipulated minimum threshold for local production and content:

Sector	Minimum Threshold (%)
Valves, actuators, taps and stops	70%
Cement	100%
Steel products and components	100%

If Section D is applicable, **Form SBD 6.2** must be completed and signed as well as **Annex C Local Content Declaration – Summary Schedule**, and must be handed in as part of the bid documentation.

IMPORTANT NOTES

Casidra reserves the right to:

- disregard any bids where the declaration (below) has not been signed;
- change the point system of the policy without prior notification;
- negotiate prices based on market related pricing before award of the bid;
- accept parts of the bid items or split bids based upon item prices
- disclose the results of the points awarded on request;
- evaluate and award points according to the documentation supplied and evaluate functionality at its own discretion;
- award the bid to the qualifying Contractor with the highest number of points scored, unless the prices are not market related or on the basis of objective criteria stated in the tender documents, like fairness, safety, public interest and international suppliers;
- to award the bid to a Contractor which does not necessarily have the lowest price.

Other Notes:

- Final points scored will be rounded off to the nearest 2 decimal places
- In the event of equal scores, the offer with the highest B-BBEE score will be successful. If scores are still equal, and where functionality is part of the bid, the offer with the highest functionality score will be successful. If the scores are still equal, the drawing of lots will determine the outcome.

The bid may be cancelled if:

- all the bid offers received are higher than R50 million;
- circumstances change and there is no longer a requirement for this service;
- funds are no longer available or if there are insufficient funds available in the budget for the work;
- no acceptable bids and/or market related prices are received;
- there is a material irregularity in the tender process;
- False information were supplied by the bidder.

For office use only	Version no: 11.16	Date: 1 February 2022
To be initialised by bidder		<i>Initial here</i>

Cancellation of bid will be placed in the same media as initially advertised.

Bids which are suspected to have supplied false information will be subjected the *alteram partem* rule. If proven that false information was supplied, disqualify the tender or terminate the contract, without payment and/or claims for damages incurred by such cancellation.

The Contractor will be liable for the recovery of all costs and damages suffered as a result of the misconduct or cancellation of the bid or less favourable conditions affecting the award of the bid.

Exclusion of the Contractor and its directors, who acted fraudulently, from any business with an organ of state for a period not exceeding 10 years after has been applied.

Declaration by the company submitting the bid:

I, _____

as the authorised representative of the company / CC / business hereby declare that, to the best of my knowledge the abovementioned information is true and correct and that I am duly authorized as a signatory of this bid. On behalf of my business I accept the terms and conditions as set out in this document. I will supply documentary proof of any information supplied herein on request and to the satisfaction of Casidra.

In terms of the POPI Act I further give consent that my contact and company details as will be captured on the **Casidra** database may be shared with the role players/funders involved in the project and be used by **Casidra** for the purpose of further procurement.

Signature

Date

SUPPLY CHAIN PERFORMANCE MEASUREMENT

In order for Casidra to measure its supply chain efficiency and effectiveness, please assist us by answering the following questions:

- What were the source that made you became aware of this bid being available?
Mark with X

Personal Email invite to bid:	
Via a friend or business partner:	
National Government E-Tender website:	
Local Newspapers:	
Casidra own website:	

Other: Specify.....

- Was the time allowed to date of closure sufficient for you to compile an offer?

No – too short	Yes - Sufficient	No - Too long
----------------	------------------	---------------

For office use only	Version no: 11.16	Date: 1 February 2022
To be initialised by bidder		<i>Initial here</i>

For office use only	Version no: 11.16	Date: 1 February 2022
To be initialised by bidder	<i>Initial here</i>	



BANK ENTITY FORM

1. DETAILS OF COMPANY / INDIVIDUAL: (Please print clearly)	
Full Name	
ID Number	
Company Reg Number	
VAT Number	
Postal Address	
Postal Code	
Physical Address	
Postal Code	
2. BANKING DETAILS	
Name of Bank	
Name of Branch	
Branch Code	
Account Number	
Type of Account	
3. CONFIRMATION BY BANK	
We hereby confirm that the bank details under paragraph 2 of this form belongs to the individual / company under paragraph 1.	
Date Stamp of Bank	BANK OFFICIAL
	Print Name:
	Signature:

For office use only	Version no: 11.16	Date: 1 February 2022
To be initialled by bidder		<i>Initial here</i>